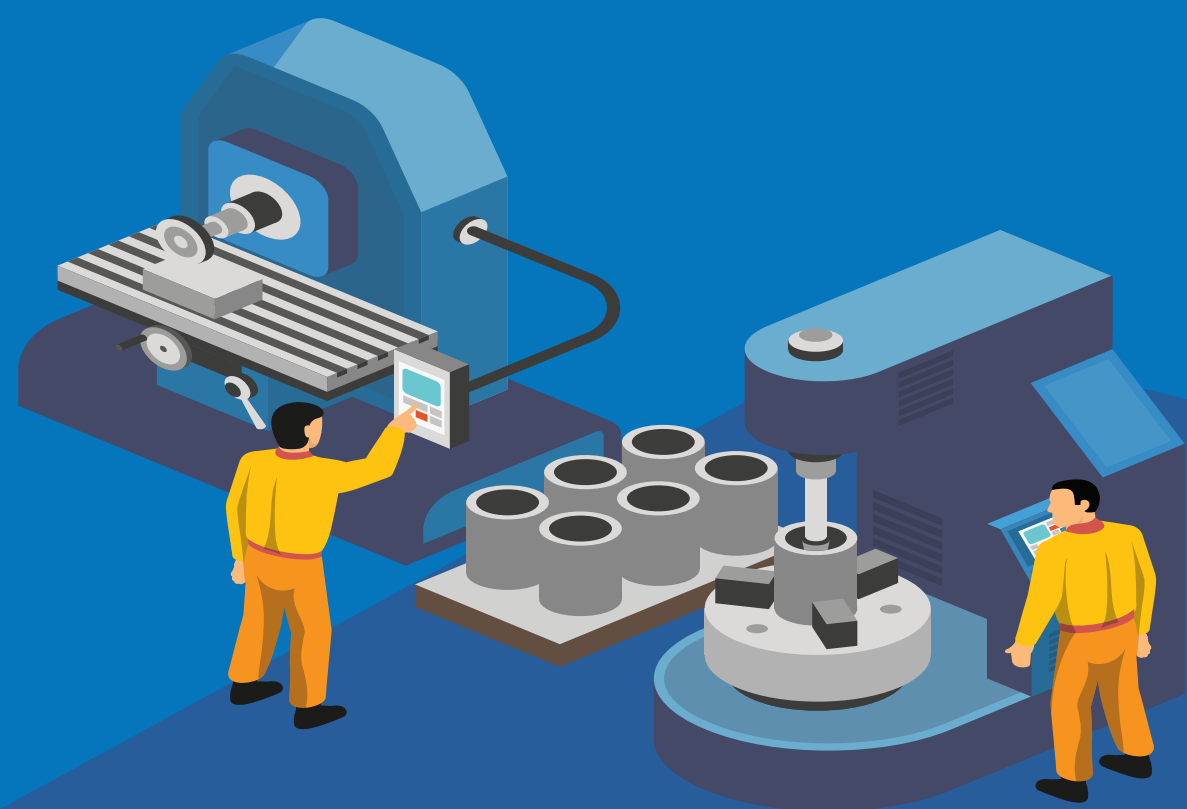


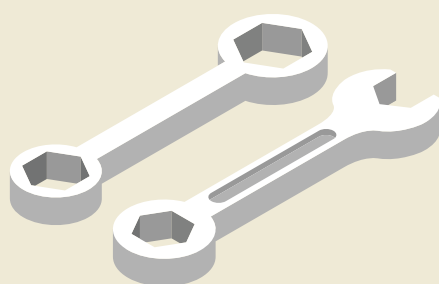
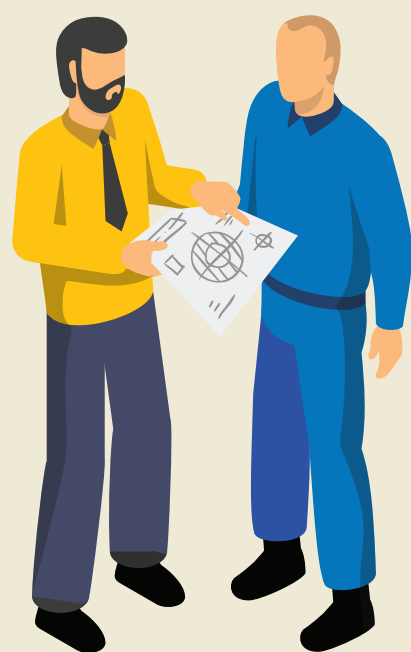
CAREER PATHWAY

SHEET METAL WORKER



SKILLS TAUGHT IN ITI

- Shearing and bending the sheet using a sheet bending machine
- Make welded snipe joints
- Perform Tungsten Inert Gas (TIG) welding, Metal Inert Gas (MIG) welding, & spot welding on sheet metal
- Make ducts, cabinets & panels



SKILLS NEEDED BY COMPANY

- Good hand-eye coordination to make precise cuts and bends in metal pieces
- Knowledge of using saws, lasers, shears and presses
- Good mechanical skills in order to operate and maintain equipment

JOB OPPORTUNITIES AFTER ITI

- Technical Assistant in government and private technical institutions
- State & central government organizations like railways, Integral Coach Factory (ICF), Heavy Vehicles Factory (HVF), Bharat Heavy Electrical Limited (BHEL), cement factories, atomic power stations, airport, transport companies, ship building, and Micro, Small, & Medium Enterprises (MSMEs)
- Automobiles body building industries & engineering workshops, tiny sector companies etc.



CAREER PATHS FOR THIS TRADE

ENTRY LEVEL

Semi-skilled sheet metal worker, Apprenticeship

MIDLEVEL

Foreman, Supervisor, Self-employment (aluminum paneling and repair work)

SENIOR LEVEL

Manager, Entrepreneur (Selling equipment for sheet Metal work, vendors for big companies)

UPSKILLING OPPORTUNITIES

- Diploma courses by lateral entry
- Apprenticeship (NAC Certificate).
- Crafts Instructor Training Scheme (CITS) to become an instructor in ITIs
- Advanced Diploma (vocational) courses under DGT as applicable